

Change Notice No.	Notification date	Implementation date
CN/A/25/006	March 25, 2025	April 07, 2025

Subject : Addition of locking system in mdi AseptiClamp CT.

Scope : This change will affect the mdi AseptiClamp CT used as a component in Single Use Assemblies. The affected part numbers are mentioned below (where # can be any alphabet or numeral)

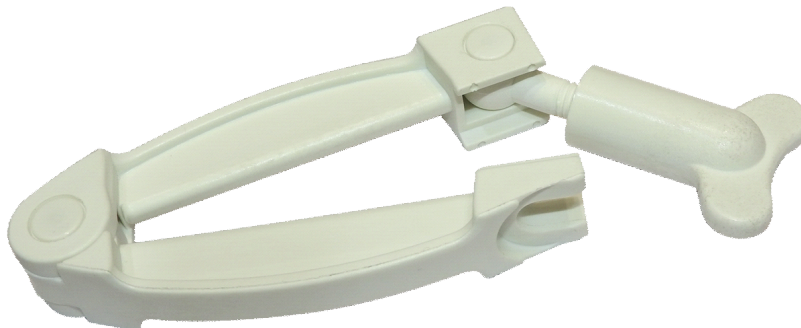
- KNXA02LXXXX####
- KNXA02RXXXX####

Background

mdi AseptiClamp CT is used to stop the flow in high pressure tubing by fully tightening of the screw of the clamp.

Prior to use of single use assemblies during transit as well as storage, complete tightening of screw in clamp can bend/pinch the tubing. Therefore, it is attached on tubing in such a way that it does not fall off, but at the same time it does not pinch the tubing. For this, the screw is not completely tightened. Picture of existing design is given below.

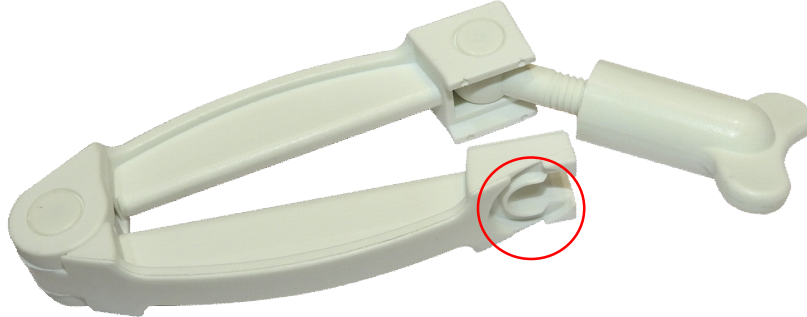
Existing design



Need for Change

It has been observed that sometimes the screw, which is not completely tightened falls off during transit and the clamp gets dislodged from the tubing. To ensure that the screw remains in place, the design of clamp has been improved (as shown in picture below for proposed design).

Change Notice No.	Notification date	Implementation date
CN/A/25/006	March 25, 2025	April 07, 2025



How Does It Affect the User

From the user point of view, only the locking design will be added in the clamp and it will kept the clamp intact on tubing. All product specifications including material of construction as well as other performance specifications shall remain unchanged.

Implementation of Change

mdi AseptiClamp CT released by QA after the implementation date will have the said changes in product. However, the available stock with old design will be supplied till the stocks last.

In case you have any queries, please feel free to contact our Technical Support Team at 'info@mdimembrane.com'.

**Head - Quality Assurance Single Use Assembly
Advanced Microdevices Pvt. Ltd.**